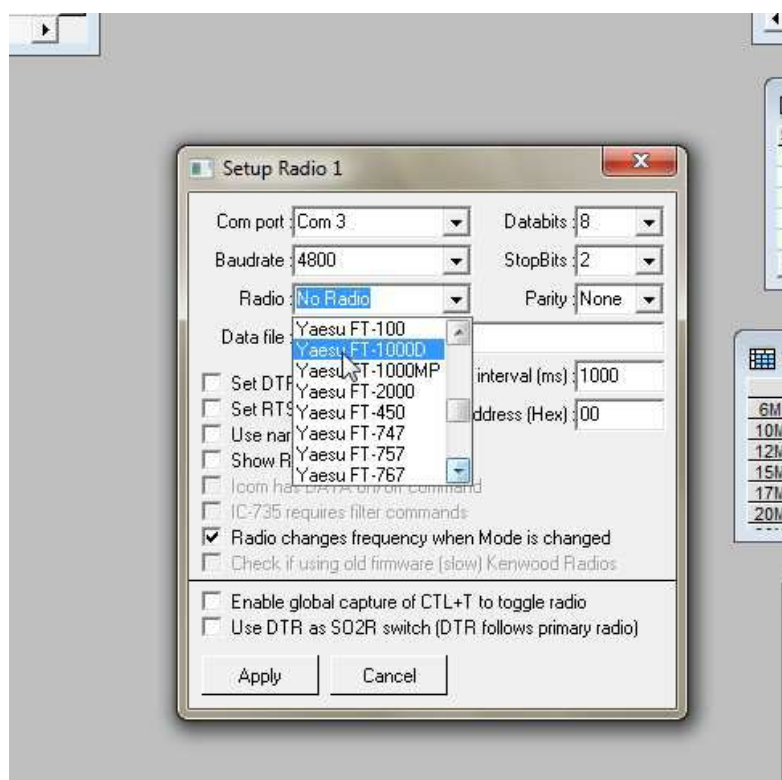
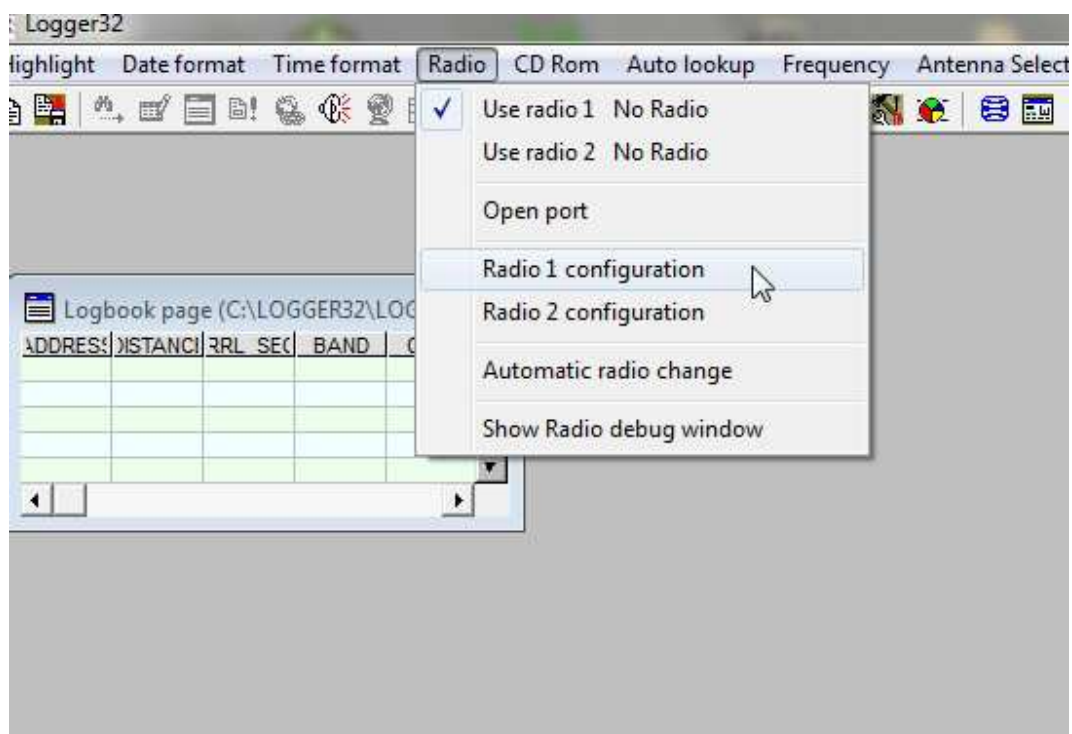
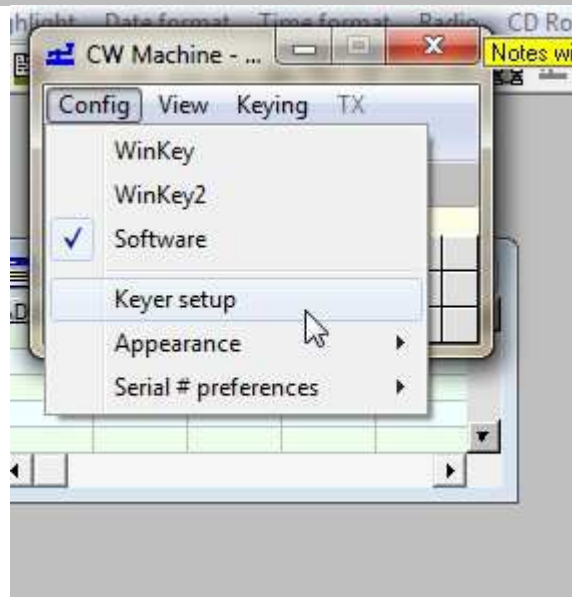
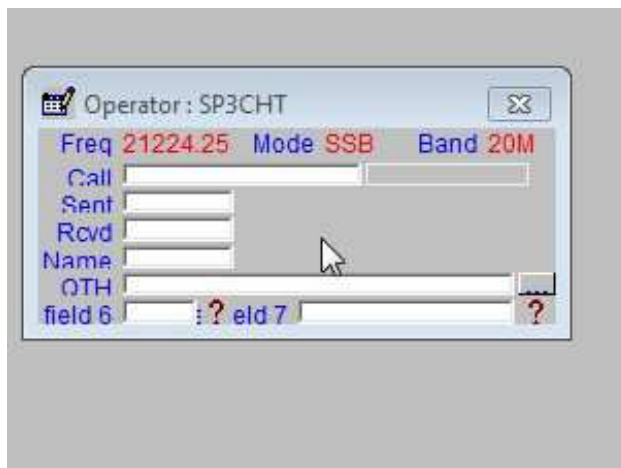
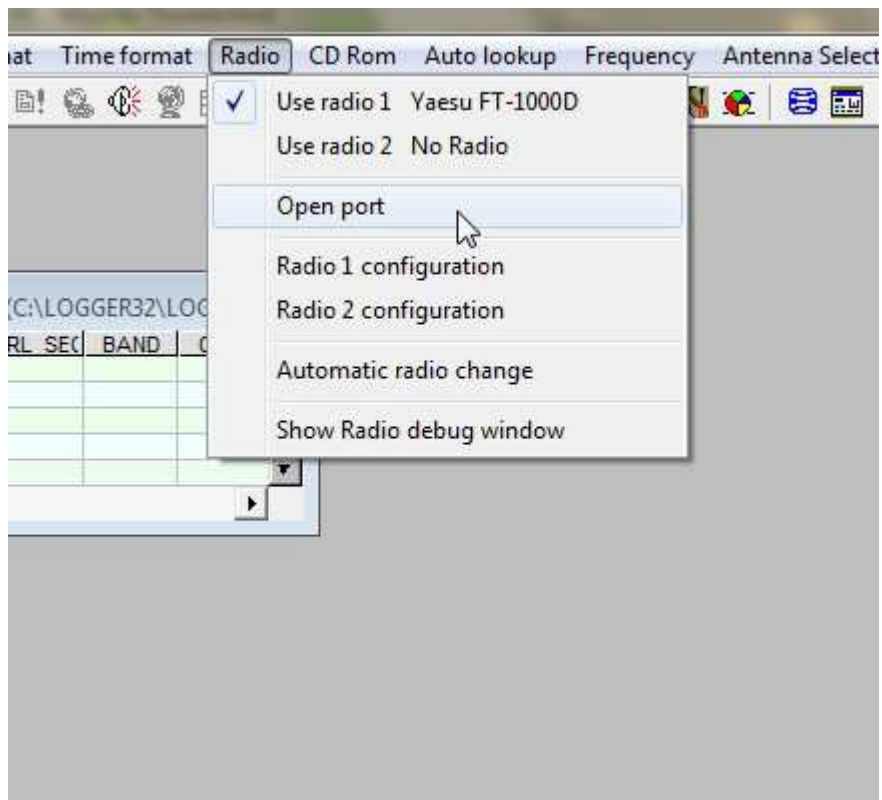
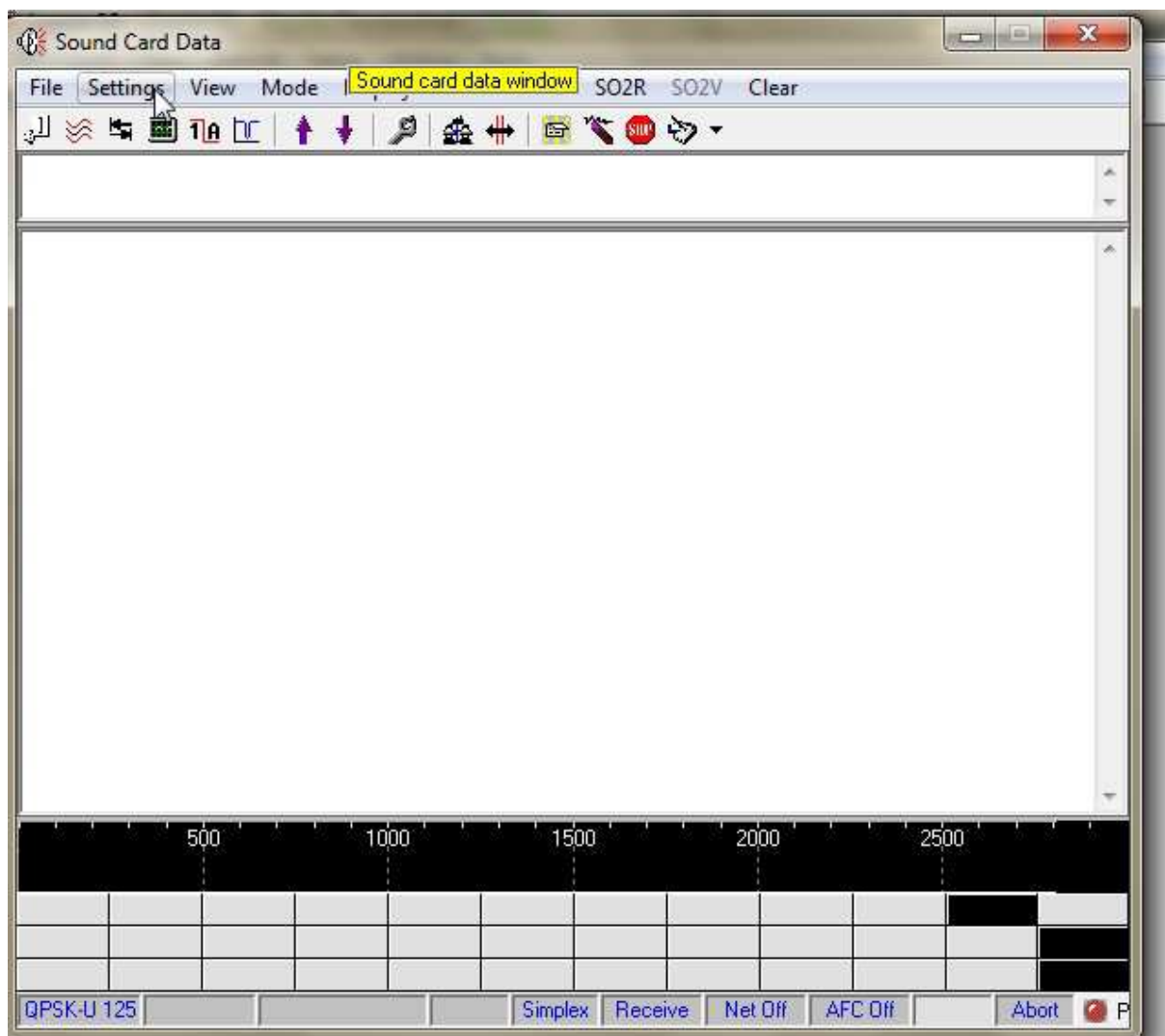
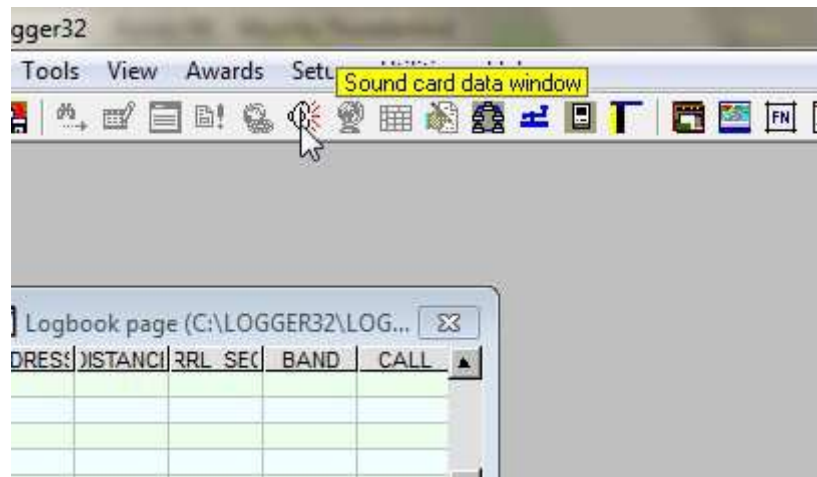
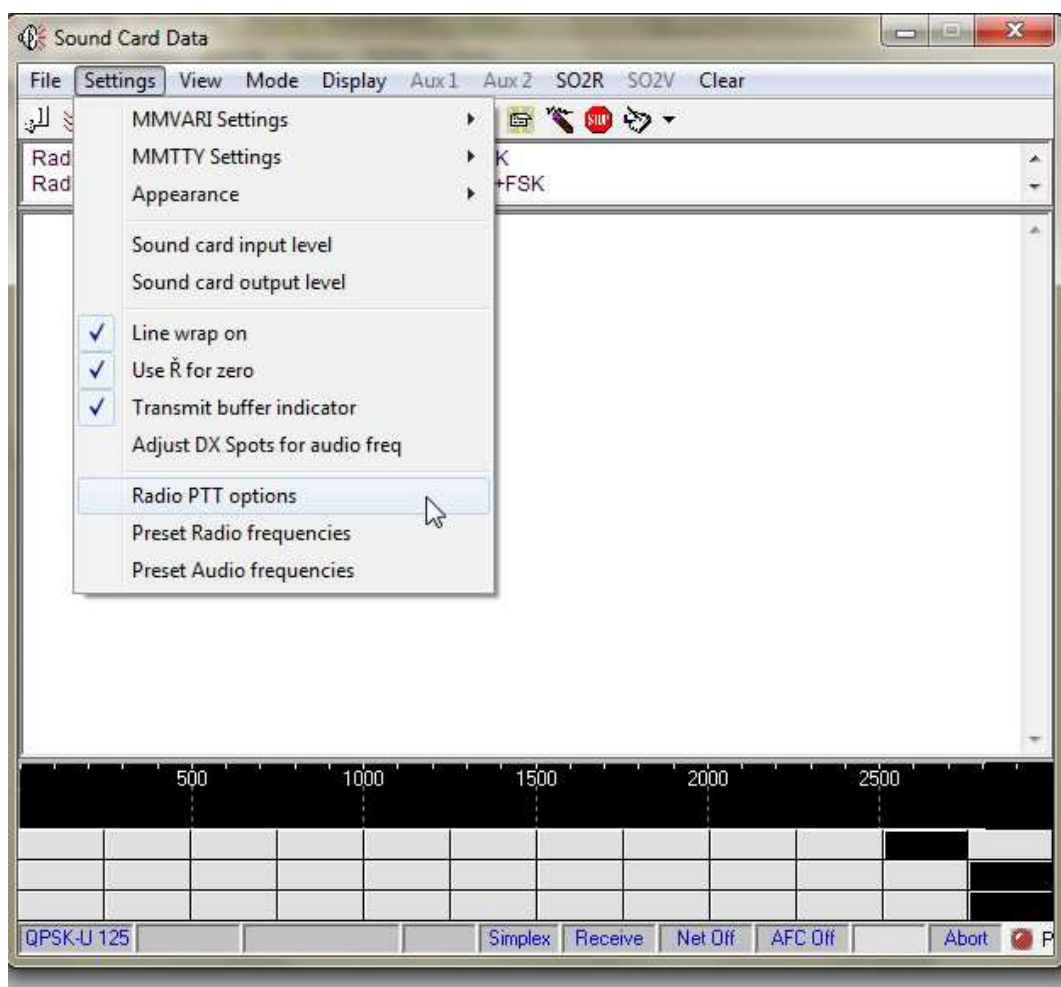
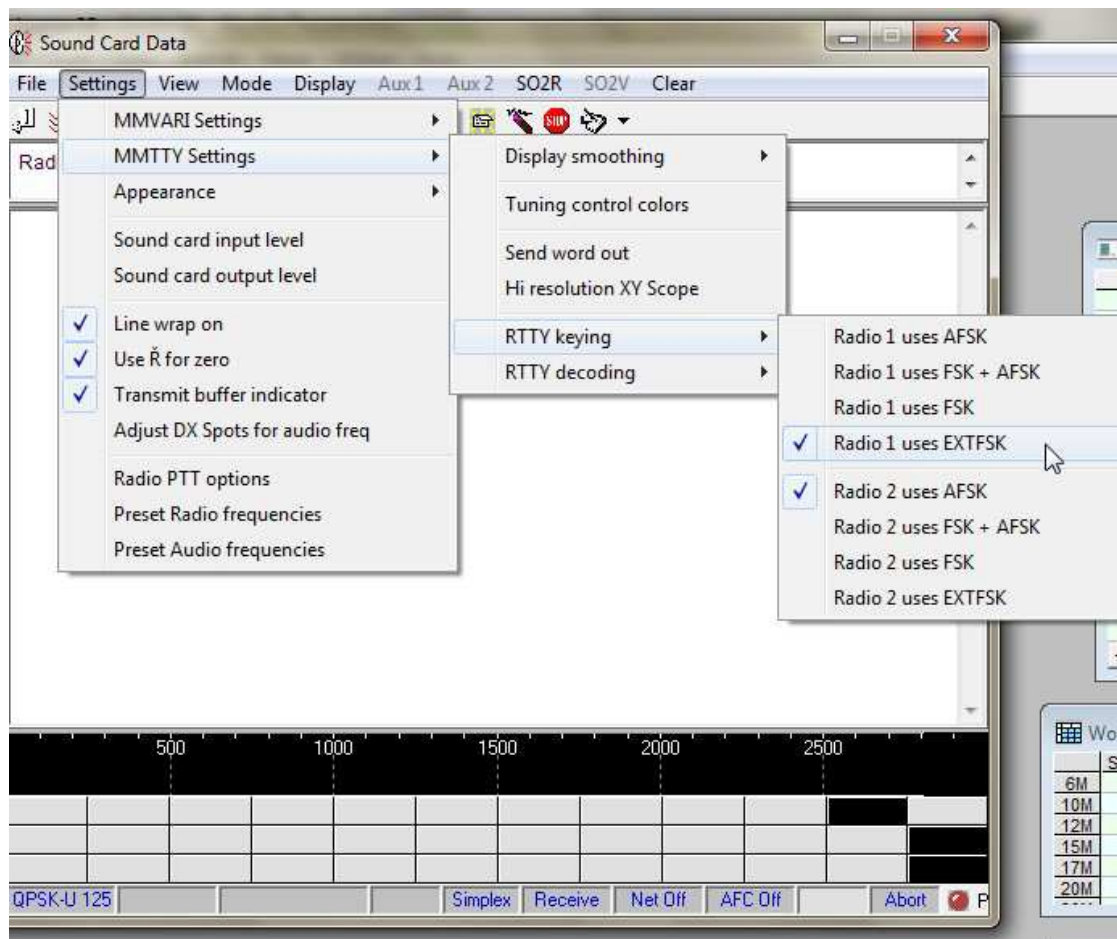


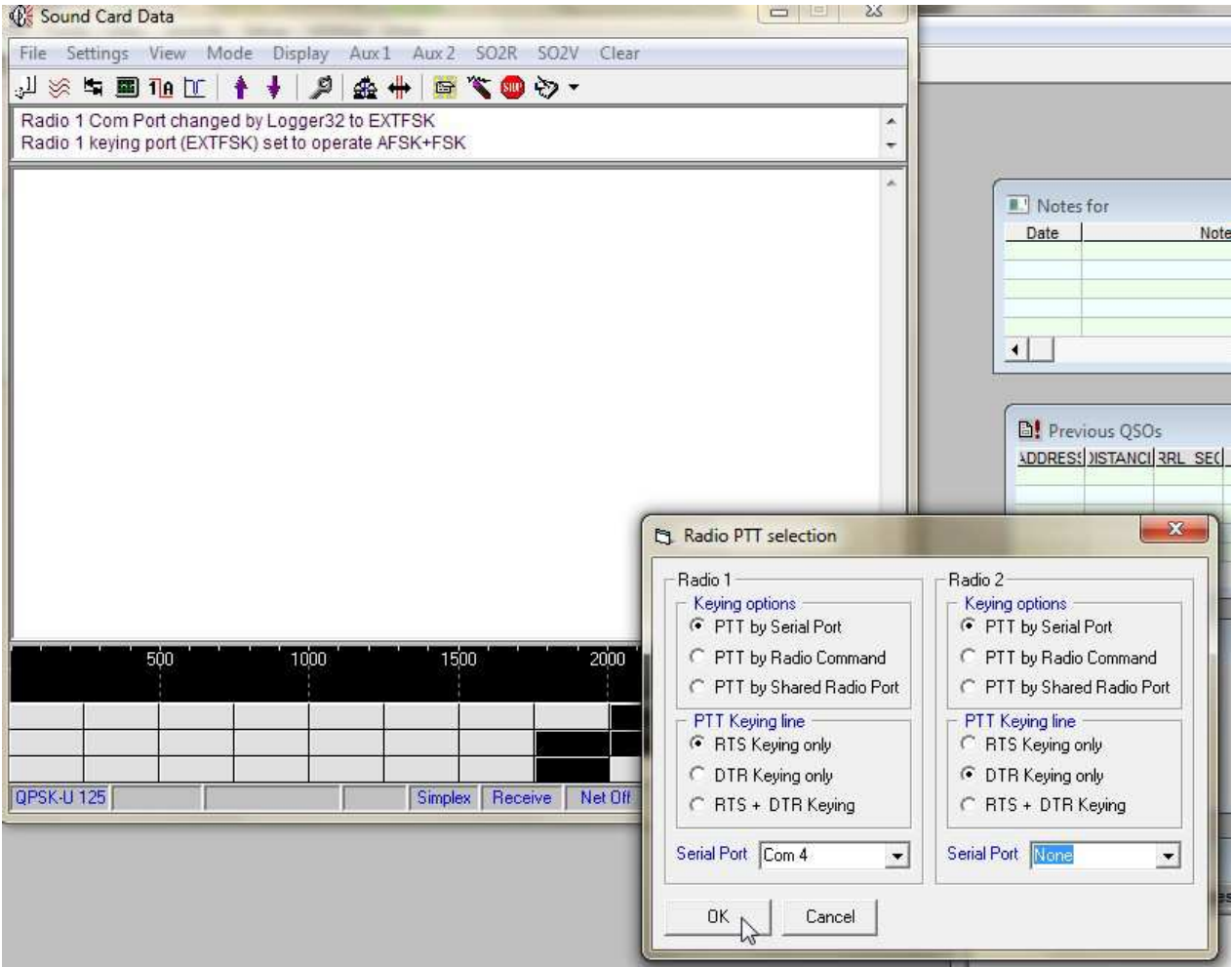
Konfiguracja programu Logger32 (MMTTY) z interfejsem musb1012.











MMTTY Engine - Ver. 1.68

File Settings View Mode Display Aux1 Aux2 SO2R SO2V Clear

Running MMTTY - Ver. 1.68

1000 2000 30

RTTY 2295 Hz 21226.541 KHz 170 Hz Simplex Receive Net On AFC On Abort P

EXTFSK 1.06

Port COM4 Status:OK

FSK output

- TXD
- RTS
- DTR

PTT output

- TXD
- RTS
- DTR

Inv. FSK Inv. PTT

TimeCapsMin = 1ms

