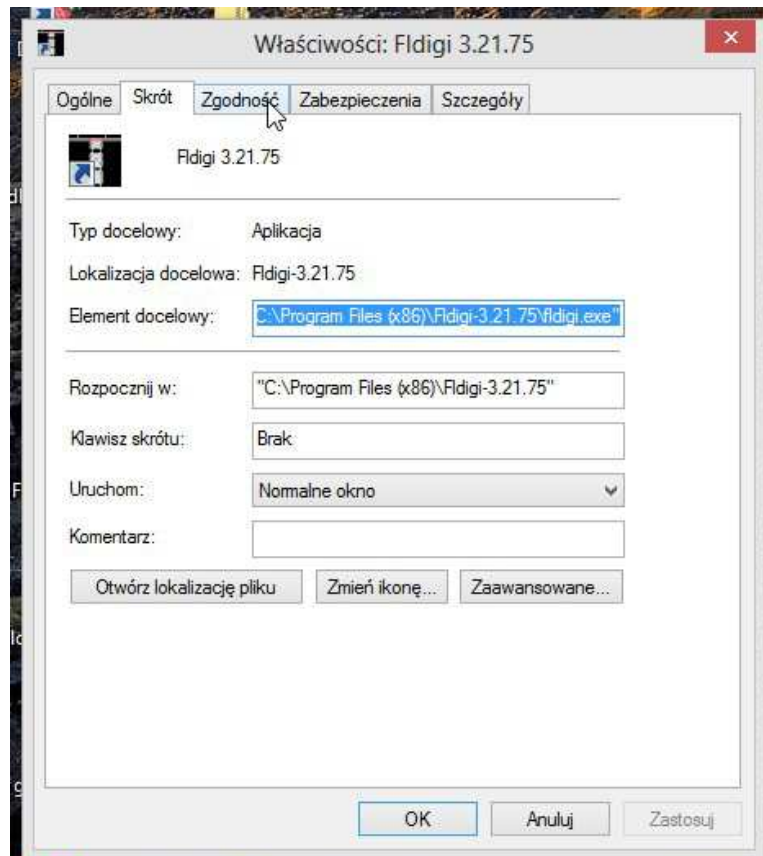
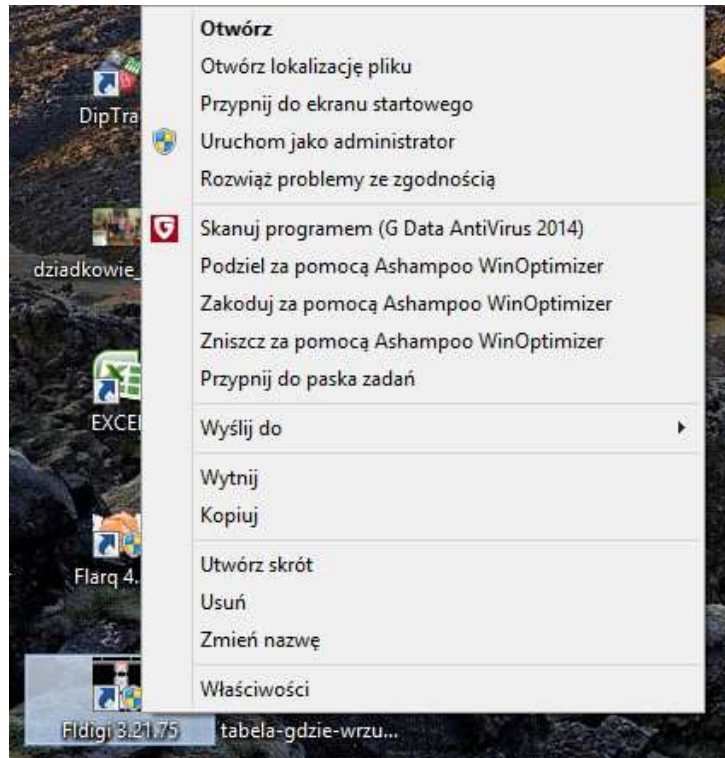
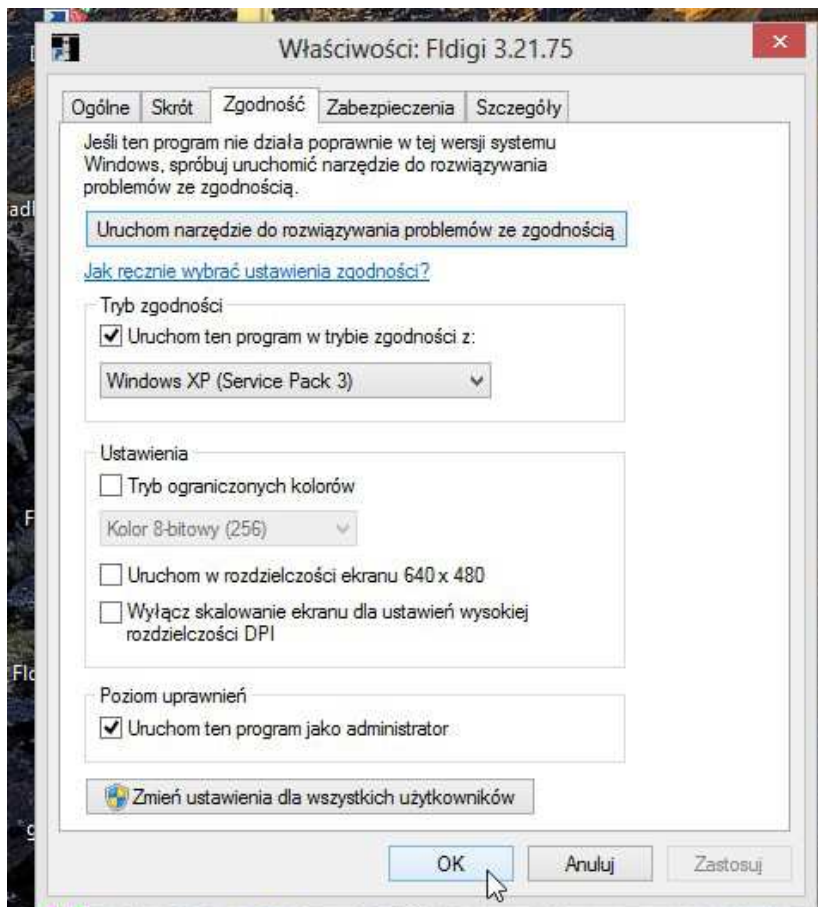
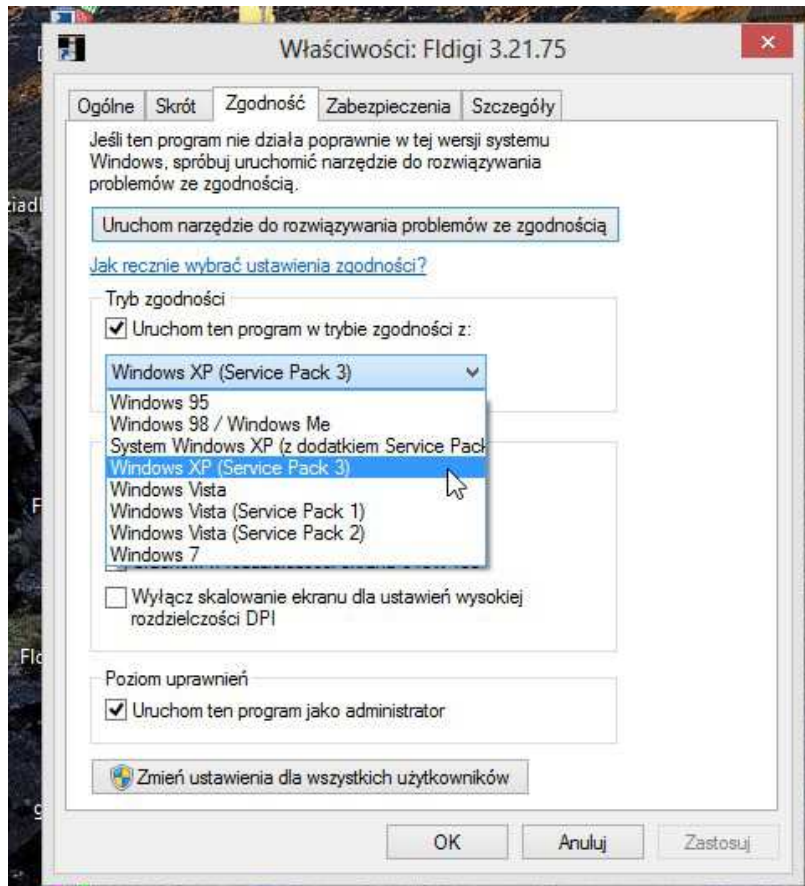


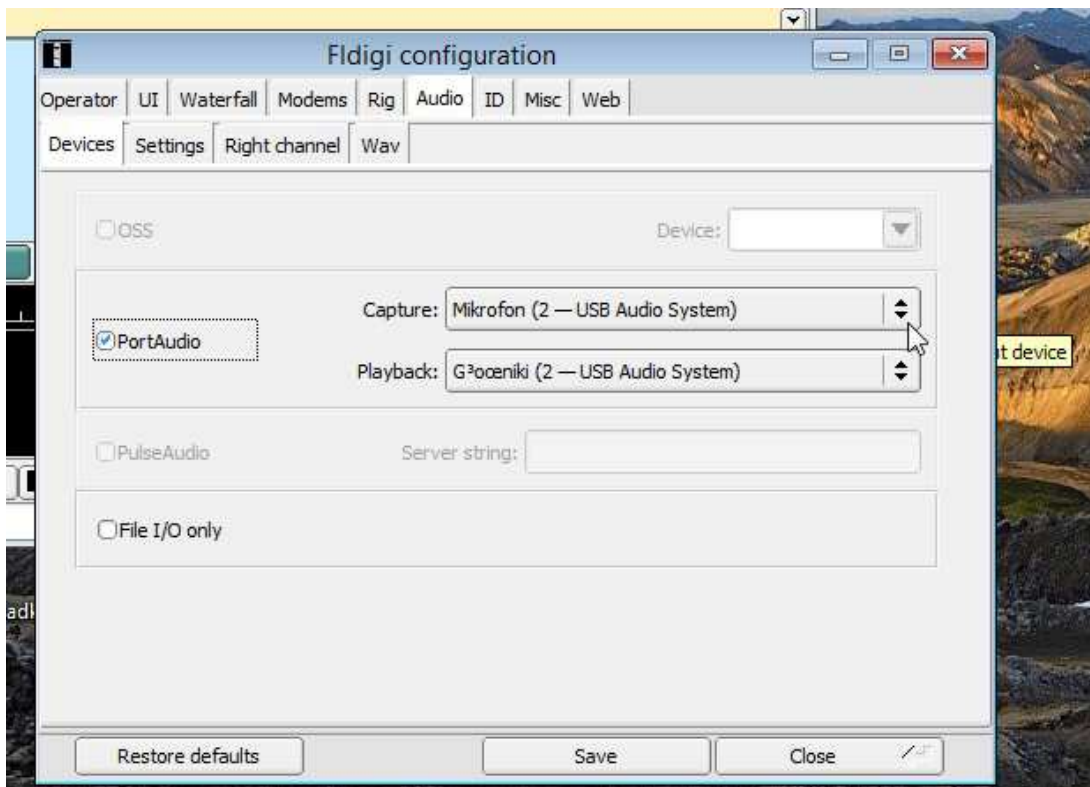
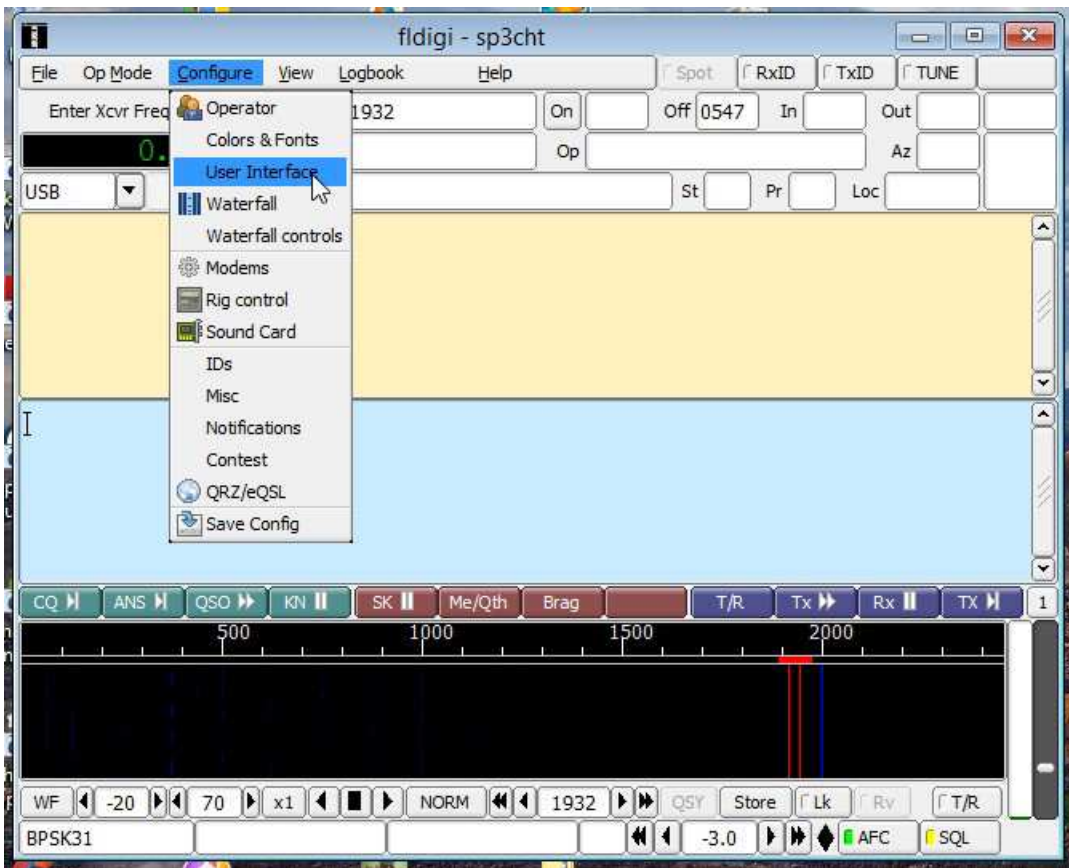
## Konfiguracja (podstawowa) programu „Fldigi” do współpracy z interfejsem musb1012.

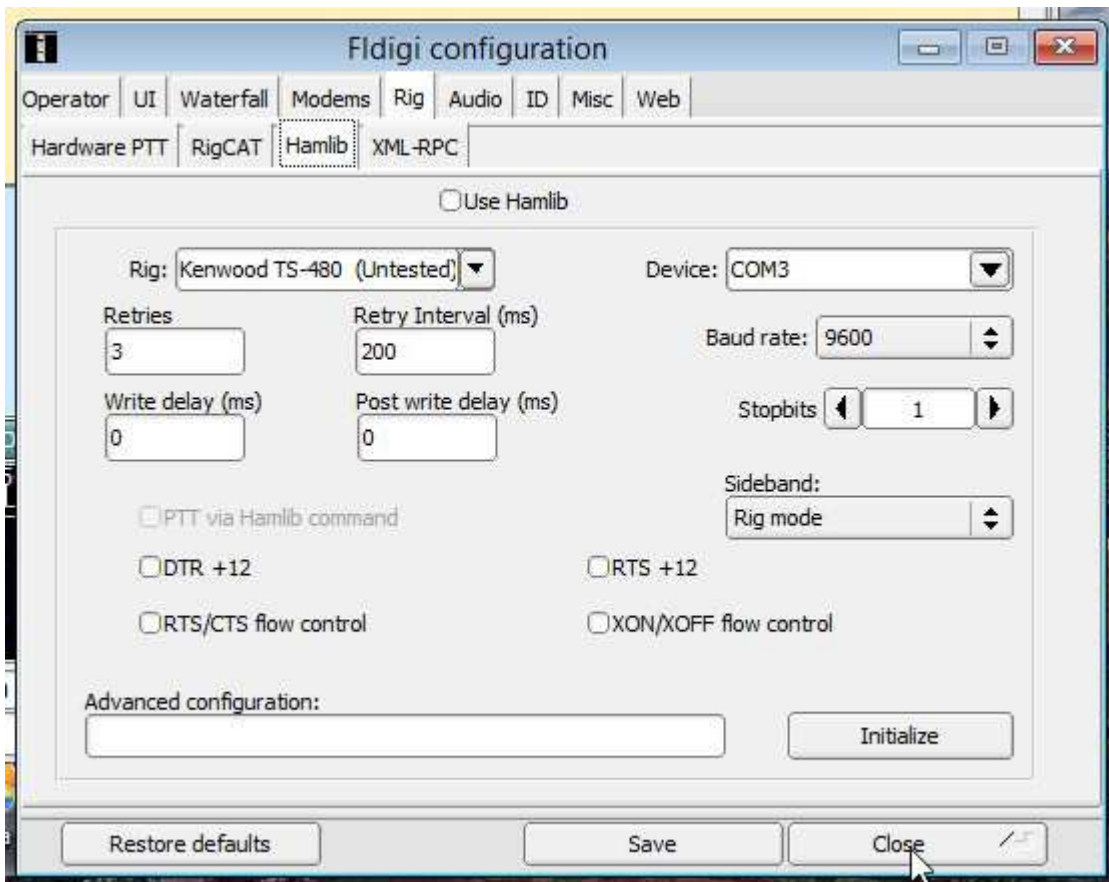
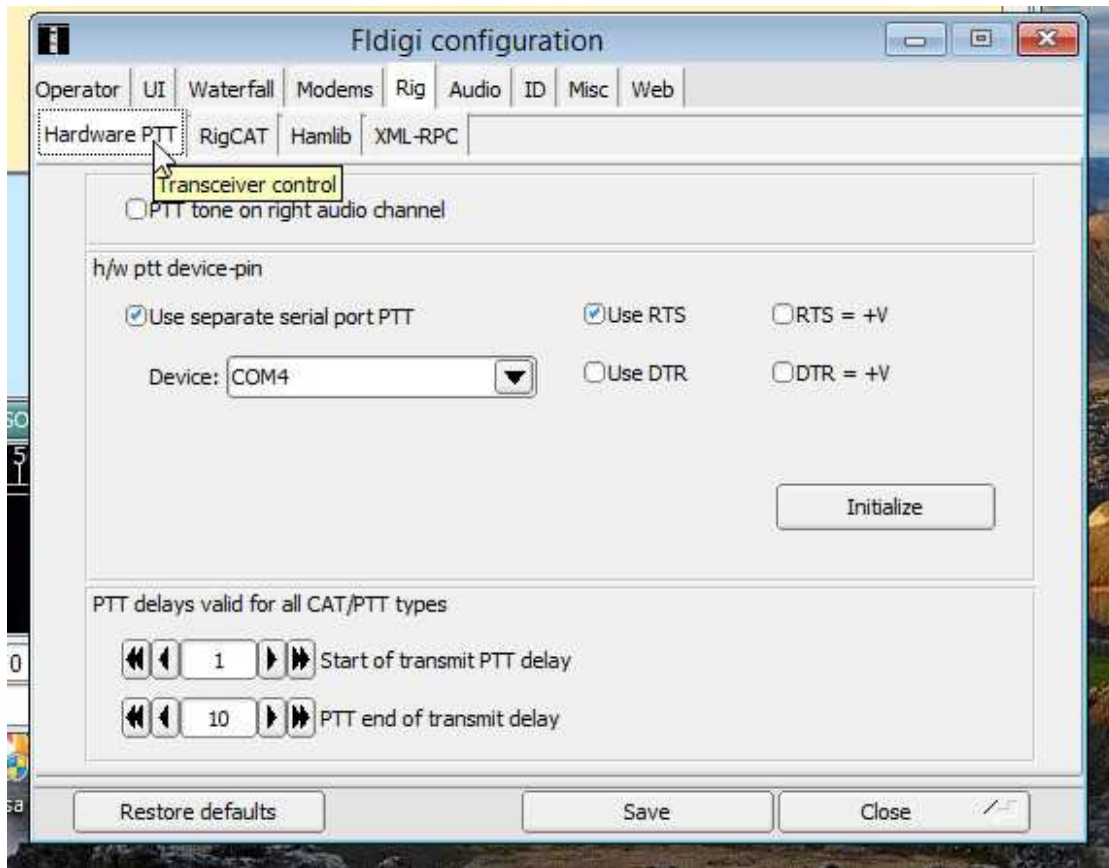
Wirtualne porty: COM3 - CAT, COM4 – FSK (PTT).

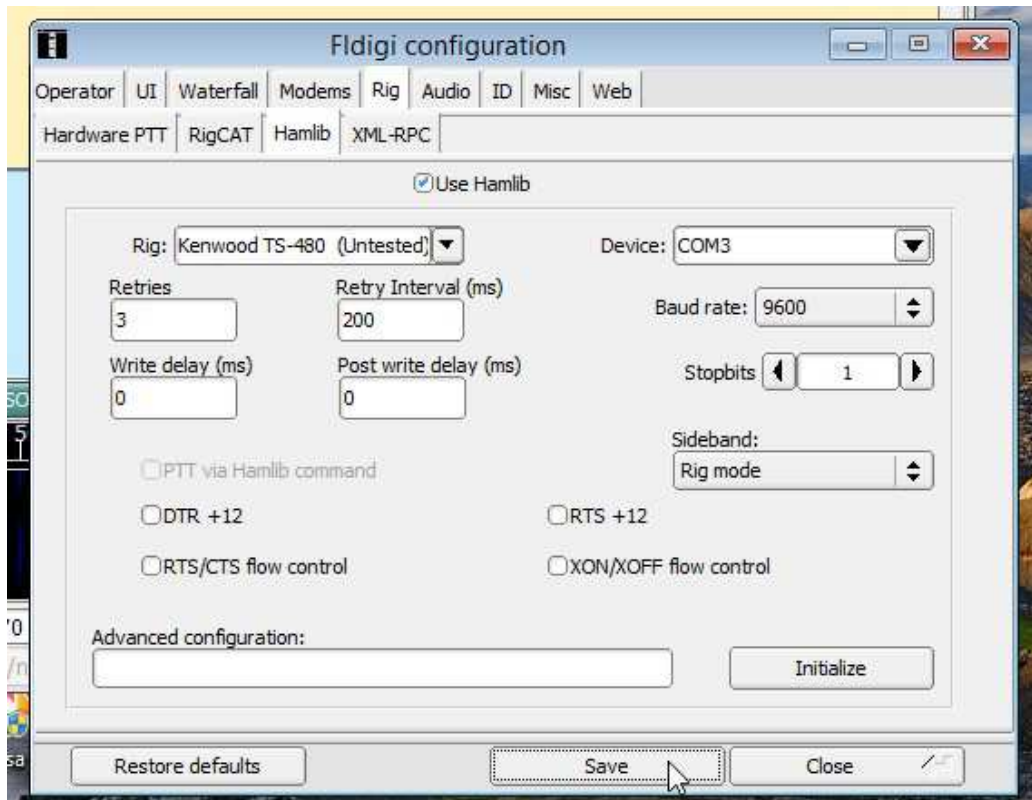
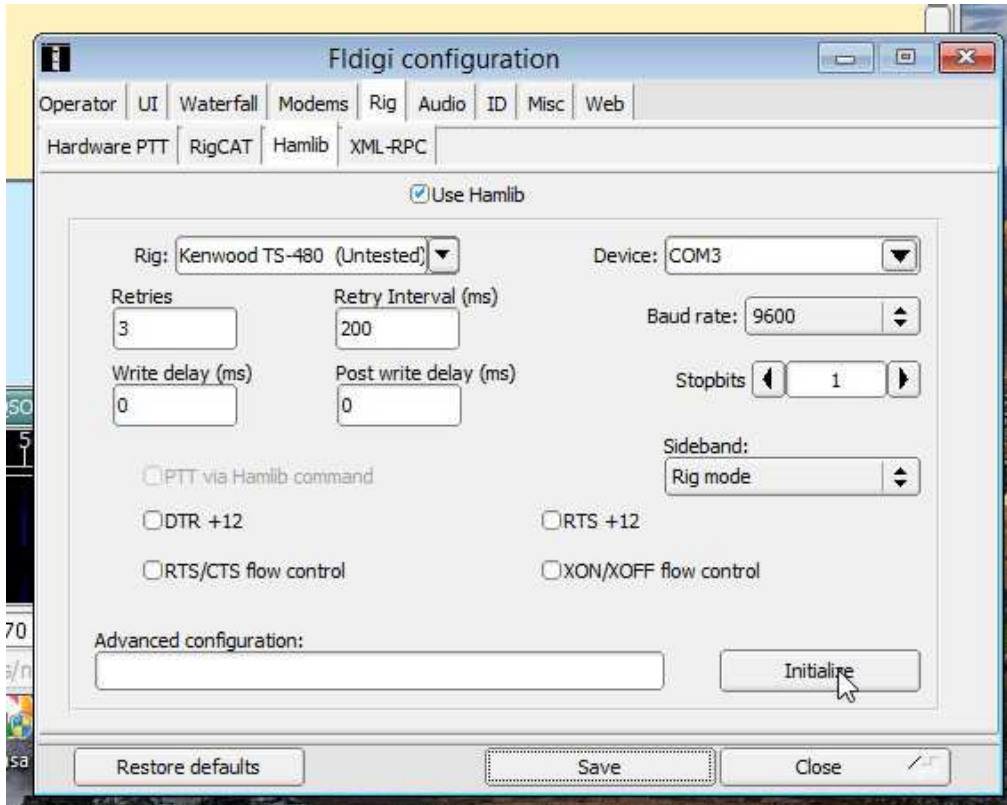
System operacyjny Windows8 PRO 64 bit.

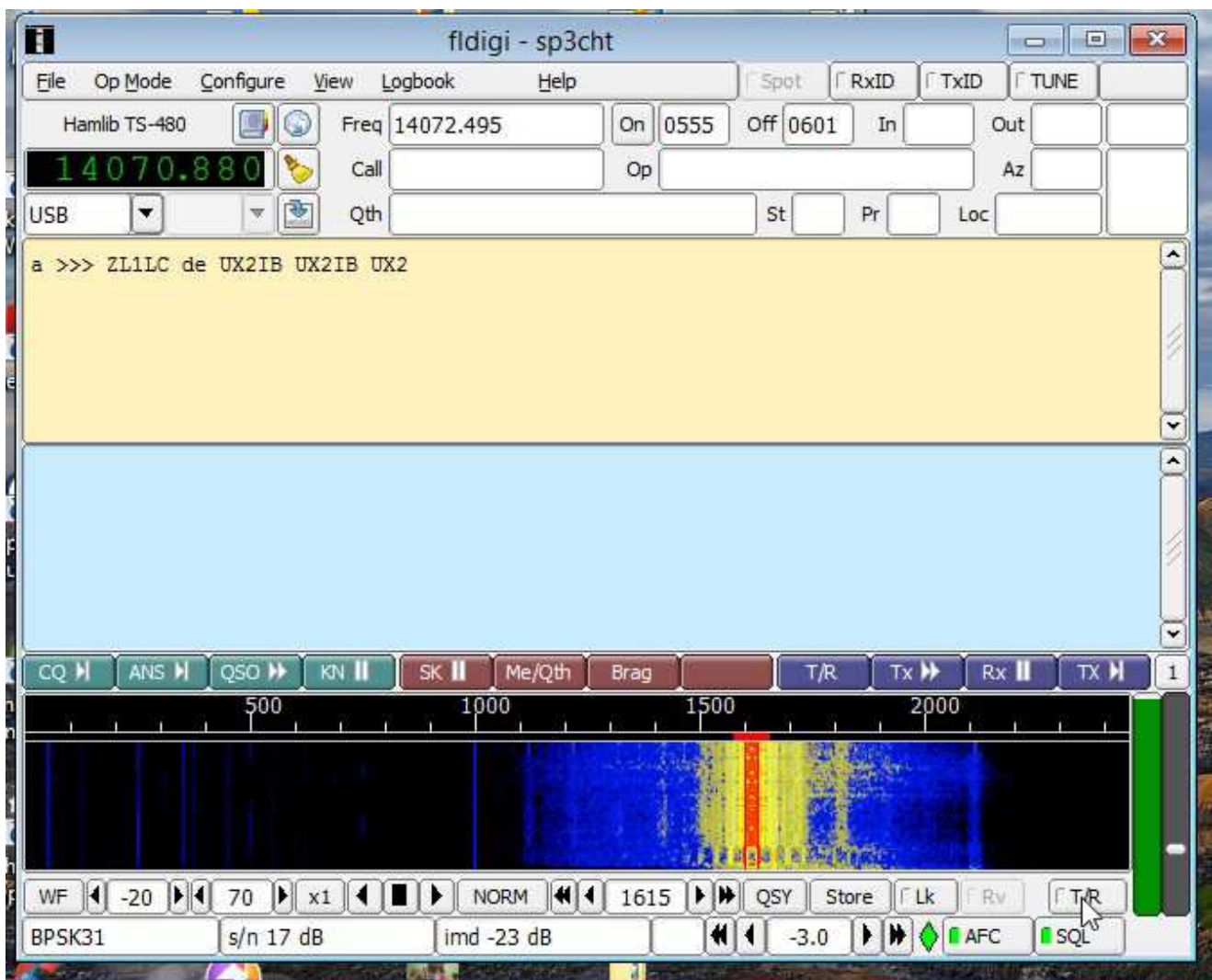
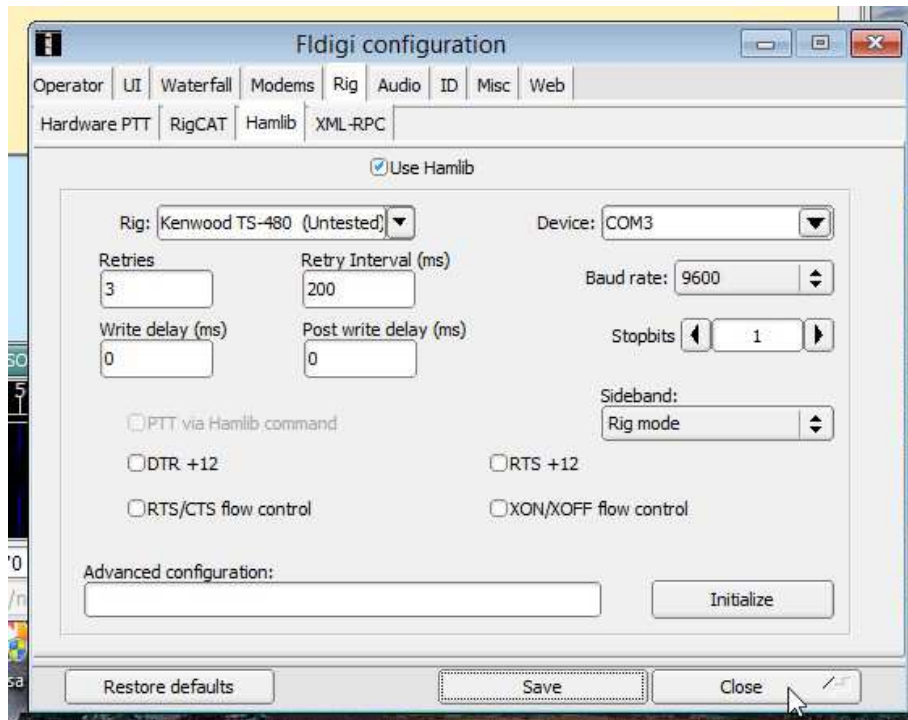












Na powyższym obrazku widać, że program odbiera stacje na psk31 oraz nadaje !!!!